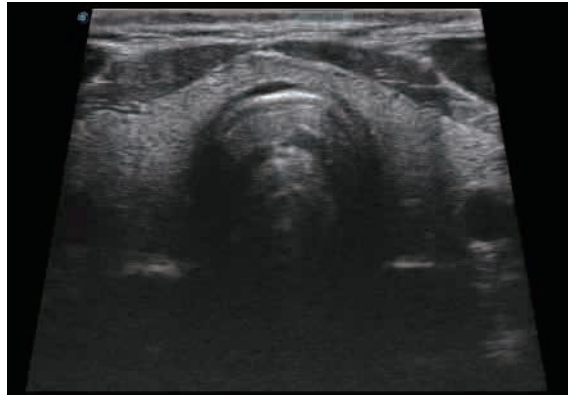
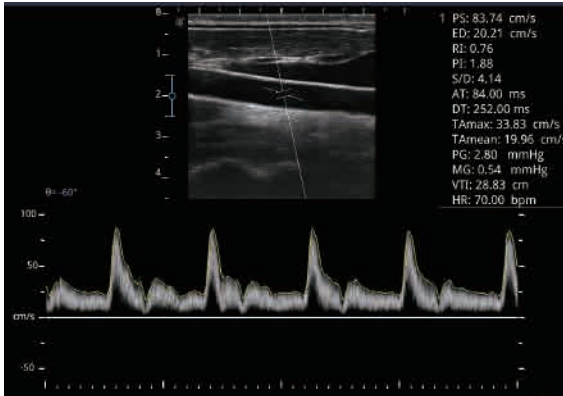


SonoScape

E1pro, as a new hand carried BW ultrasound model, is equipped with complete functions which enhance its competitiveness among entry level ultrasound models. It not only provides satisfying image quality but also brings users smooth workflow experience.



Suits to Your Needs



Efficient Diagnosis

- μ -Scan, Speckle Reduction & Edge Enhancement
- Spatial Compound Imaging
- PIH - Pulse Inversion Harmonic
- Wide Scan - Enlarge Image Area
- PW Doppler
- Chroma - Highlight Image Details
- B Steer for Linear Probe

Ergonomics Designs

- Up to 2 Transducer Ports
- Light Weight and Compact
- 15.6 inch Anti-flickering HD LED Screen
- Tilting Monitor Angle Adjustment
- Backlit Keyboard and Intelligent Panel
- Long-lasting Battery for 90mins

Ease of Use

- Quick Boot Up
- Auto Brightness Adjustment
- Auto Image Optimized
- Auto IMT
- Auto Trace

Equipped Accessories

- Wi-Fi and Bluetooth Available
- DICOM
- 500GB Hard Disk
- Height Adjustable Trolley
- Durable , Carry-on Site Suitcase