



INNOVATIVE VETERINARY SOLUTIONS

FOR THE MODERN DAY VETERINARY PRACTICE



SUPPLIER OF DIGITAL X-RAY • ULTRASOUND • CT •
DENTAL IMAGING EQUIPMENT • CLOUD PACS SOLUTIONS



PLH MEDICAL LTD

Established in June 1977, PLH Medical Ltd has grown to be one of the leading suppliers of X-ray imaging equipment and solutions across its markets in the UK and internationally.

Whatever your demands in practice, PLH Medical has an advanced and wide range of cutting edge X-ray imaging equipment to suit your needs. Over many years PLH Medical has developed enviable working partnerships with some of the most respected names in our profession. The cornerstone of our success has been based on the values of uncompromising customer service, product reliability, and true value for money.

For our latest news, updates and special promotions, head over to our social media @plhmedical



CALL 01923-237-521
www.plhmedical.co.uk

Contents

3Out of Hours
4Service Packages
6Computed Radiography
8Imaging Archiving Solutions
10Digital Radiography
12Computed Tomography (CT)
14Advanced Ultrasound
17Siemens Finance Services
18Ultrasound Equipment
20X-ray Equipment
23LearningHub CPD Training
24Dental X-ray Equipment
25Digital Dental Equipment
26Veterinary Autoclaves
28Veterinary Accessories
30What Our Customers Think

PLH Medical Ltd

Unit 4 Dakota Court, Amy Johnson Way,
Blackpool Business Park, Blackpool, FY4 2RP

Telephone: 01923 237521
Email: service@plhmedical.co.uk
sales@plhmedical.co.uk
cpd@plhmedical.co.uk

Website: www.plhmedical.co.uk

Opening Hours

Monday - Friday: 08:30 - 17:00
Out of Hours Service Available

OUT OF HOURS SERVICES

Out of Hours Emergency and Support Contracts available

Due to high demand from our practices, we can now offer Out of Hours emergency and support contracts. These contracts cover critical imaging equipment. In fact, our new Out of Hours, 24/7 – 365 professional support services are designed specifically to offer peace of mind to busy practices that offer enhanced and out of hours care.

Additionally, at a time when imaging facilities are under pressure to deliver excellent levels of care, seven days a week, we are pleased to announce that PLH Medical is already working to provide support and guidance to our customers when needed, any time of the day or night.

At PLH Medical, we are committed to the ongoing productivity and safety of our customers who use a range of veterinary equipment. We have a large network of service and repair engineers within the UK, providing support around the clock.



With a clear commitment to our customers to deliver exceptional quality and value, PLH Medical is focused on providing emergency support for a wide range of veterinary equipment.



Key Benefits

- Planned Preventative Maintenance Visits* (PMV's) to keep your imaging equipment performing at its very best.
- Special discounted support rates in case of a break down.
- On-line support by a qualified and fully trained specialist.
- Free software upgrades.
- Dedicated 24/7 imaging help desk.
- Preferential spare parts pricing.

For information on a level of agreement to suit your needs, please contact us:

01923 237521 during office hours.

*OUT OF HOURS NUMBER: 0845 8300 932

* Contract customers only.

SERVICE PACKAGES

Is your equipment covered if there is a fault?

We offer four comprehensive service and repair packages, designed to meet a variety of needs and budgets, that cover all manufacturers. Yearly maintenance and inspection visits are included in all plans, ensuring equipment remains in a safe and working condition.

When you purchase equipment for your practice you need to be confident that it is working to its full potential at all times. Your equipment is fundamental in the day to day workings of your practice. Service plans from PLH Medical can offer comprehensive breakdown cover to suit your needs and budget.

With a number of our service plans providing priority response times we can help reduce the costs of a regular call out and disruptive downtime. Our engineers can arrive at your practice at times that are most convenient for you. Our goal is to get your equipment and practice back up and running as quickly as possible.

If a problem cannot be resolved by our engineers remotely or fixed on site, loan imaging equipment can be made available to keep disruption to a minimum until your own unit is repaired or other arrangements made.



CALL 01923-237-521
www.plhmedical.co.uk



Bronze Plan

- Unlimited telephone and remote support from 09.00 – 17.00 Monday to Friday – excluding Bank Holidays.
- Complimentary remote software updates.
- Telephone response time – guaranteed to respond within 60 minutes.
- Includes an annual preventative maintenance visit.



Silver Plan

- Unlimited telephone and remote support from 09.00 – Midnight each day excluding Bank Holidays.
- Complimentary remote software updates.
- Telephone response time – guaranteed to respond within 45 minutes.
- Includes an annual preventative maintenance visit.



Gold Plan

- 24 Hour unlimited telephone and remote support excluding Bank Holidays.
- Complimentary remote software updates.
- Telephone response time – guaranteed to respond within 45 minutes.
- A complimentary loan digital processor solution available for period of investigation/repair.
- A complimentary loan portable x-ray solution available with stand for period of investigation/repair.
- Includes an annual preventative maintenance visit.



Platinum Plan

- 24 Hour unlimited telephone and remote support including ALL Bank Holidays.
- Complimentary remote software updates.
- Telephone response time – guaranteed to respond within 30 minutes.
- A complimentary loan digital processor solution available for period of investigation/repair.
- A complimentary loan portable x-ray solution available with stand for period of investigation/repair.
- Includes an annual preventative maintenance visit.

COMPUTED RADIOGRAPHY



Advanced imaging technology from AGFA Healthcare

Looking for an affordable way to move from conventional to digital imaging? Look no further than AGFA compact tabletop Computed Radiography (CR) systems. Our Computed Radiography solutions are outstanding and a true market leader.

- All images are scanned in high resolution
- Rapid processing speeds
- Fully automatic loading and unloading of cassettes
- CD Burner with image viewing software
- Body part specific algorithms for Equine and Small Animal radiography

The new compact CR15-X has the ability to process Intra Oral Veterinary Dental plates. When used in conjunction with popular AGFA NX image acquisition software and MUSICA image processing it is no surprise that PLH Medical solutions are some of the most widely used in the Veterinary profession.

A recent and really exciting development has been the launch of Needle Phosphor technology within Veterinary Healthcare. This allows for your new CR15-X digitiser to reach much higher levels of diagnostic clarity than were possible with the use of the traditional phosphor CR plates.



Since the popularity of digital imaging in the veterinary market, AGFA NX software incorporating MUSICA image processing has been at the forefront of technical innovation. AGFA NX software provides versatile and powerful tools that are relied upon day to day within a veterinary practice. With the recent groundbreaking launch of MUSICA3, PLH Medical digital solutions go from strength to strength.



CALL 01923-237-521
www.plhmedical.co.uk

MUSICA
empowered



CR10-X

The tabletop CR10-X digitiser is based on proven AGFA technology, with a modular yet robust design offering affordability without compromising on image quality. Versatile, this Computed Radiography (CR) digitiser can handle General Radiography, Orthopaedic, Chiropractic and Full Leg/Full Spine applications.

Convenient and fast workflow

The CR10-X works in conjunction with AGFA NX, image identification and quality control tool, for a highly efficient and optimised radiology workflow. The CR10-X reads all imaging plates at the high resolution of 10px/mm (100 µm pixel pitch). The dedicated cassettes are inserted horizontally, which prevents dust and dirt from being introduced during normal operation.

Robust yet easy to install and maintain

Installing the CR10-X is fast and easy. Special LED technology in the erasure unit means low power consumption.

Small physical footprint

With its tabletop size, the CR10-X digitizer can be placed easily at any location, no matter how small, and was designed with ease of use and mobile applications in mind.

Networking capabilities deliver seamless integration

The CR10-X is fully DICOM conformant, for seamless integration with other solution elements.

CR10-X Specifications:

Dimensions and weight

(W x D x H): 580 x 700 x 471 mm

Depth without cassette unit and extension:

380 mm • Weight: 29 kg

Plates Processed Per Hour

34 Plates

Cassette Sizes/Types*

35x43



CR15-X

Making your existing solutions work harder for you is a driving force in today's economically challenging environment. With the CR15-X's versatility and integration delivering increased workflow, you maximise your return on investment.

The simple yet smart new design concept of the CR15-X creates an affordable entry to the digital radiography environment. By addressing your need for both workflow efficiency and resolution, it is the ideal choice for the cost-conscious organization.

Fits in small spaces and is suited for mobile applications

The CR15-X was designed with ease of use in mind. With its tabletop size and weight, the digitiser is suited for any location, including small spaces. With its low power consumption, the CR15-X and laptop configuration can be powered with a 12V battery and power inverter for mobile use.

Networking capabilities deliver seamless integration

The CR15-X is fully DICOM conformant, for seamless integration with other solution elements.

- Versatile and cost-effective multiple study capabilities
- Ideal for space restricted environments
- A robust and reliable solution
- MUSICA powered – No compromise on image quality

CR15-X Specification

Dimensions and weight

(W x D x H): 22.8 x 27.6 x 18.5 in (580 x 700 x 471 mm)

Depth without cassette unit and extension:

380 mm • Weight: 30 kg

Plates Processed Per Hour

102 plates/hour

Cassette Sizes/Types

18x24 - 24x30 - 35x43 - Dental Cassette - NIP Plate Option

* 24x30 cassette size adapter available.

IMAGE ARCHIVING SOLUTIONS



Take advantage of PACS with VetHub.cloud

Can your x-ray back-up method tick the following boxes?

- X-ray images automatically backed-up securely?
- A patient's digital x-ray images including dental, ultrasound and photos all stored together?
- X-ray images available to view in consult rooms, theatre or any network connected device?
- Compare a patient's x-ray images from different dates and different imaging modalities?
- Easy to share x-ray images in DICOM with referral hospitals?
- Audit to see who, when and where x-ray images have been viewed, edited and shared externally?

With the routine use of multiple imaging modalities and the growing number of studies acquired, there is an increasing pressure on practices to store data securely, but easily accessible. VetHub.cloud achieves this seamlessly in the background, leaving you to concentrate on animal care.

VetHub provides a solution in a secure, easy to use cloud platform to store digital x-rays, digital dental, ultrasound, CT, MRI, digital photos, video clips and more.

VetHub has a user-friendly interface, providing ease of access for the viewing of all stored images throughout your practice, including branches, on any network attached device.

View them on your mobile device as though you were in your practice. Sharing images with a referral hospital or teleradiology services is both easy and secure. A powerful audit trail means you retain full control over your images.

VetHub is a sophisticated yet intuitive PACS system to suit all sizes of practice and will provide an essential role in the management of your x-rays. Available on a monthly subscription.

IMAGE ARCHIVING SOLUTIONS
VISIT VETHUB.CLOUD TO START YOUR

30 DAY FREE TRIAL

TODAY!



CALL 01923-237-521
www.plhmedical.co.uk



AGFA



Trade in your AGFA CR and talk to us about our easy upgrade program.

High Resolution Direct Radiography just became an affordable option.

Lightweight yet robust, the AGFA DR-14e Digital Detector offers your practice all the advantages of Direct Radiography, while maximising the use of your existing equipment.

The AGFA DR-14e panel can be retrofitted to virtually any x-ray unit.

- The easiest and most versatile way to go Direct Radiography
- Convenient 14x17-inch size and light weight
- Fewer retakes improves the delivery of patient care and comfort
- Easier patient positioning enhances workflow
- Ergonomic design is easy to clean and disinfect
- Excellent connectivity with DICOM-compatible software and imagers enables fast sending of images



Do you have an existing AGFA CR in your practice? Talk to our friendly team to discuss how you can easily upgrade to Direct Radiography.

DIGITAL RADIOGRAPHY



Digital radiography equipment has transformed

Digital radiography equipment has transformed the way many healthcare facilities perform x-ray imaging, providing significant benefits in efficiency, image quality, and patient care. With many facilities experiencing ever-increasing patient and exam volumes, the use of digital radiography equipment is a natural fit for gaining much-needed productivity improvements that can deliver a rapid return on investment.

PLH Medical offers digital radiography equipment solutions for every budget, space and patient volume criteria enabling radiology professionals to capture, process and view high-quality digital images within seconds.

Advantages of digital radiography

Wondering what the advantages of digital radiography can bring to your practice? Digital x-ray imaging can deliver a higher quality of care to your patients, provide you with better x-ray image quality to work with, eliminate the need for chemical developers and improve efficiencies across your entire practice.

Digital radiography provides so many advantages over conventional film that it's easy to see why practices are making the transition to digital x-ray systems in waves.

In addition, your clients expect to find modern technology in your practice. When you go digital, you provide expert treatment to your patients — while improving the efficiency of your office, saving time and money.

There's never been a better time to go digital

When you purchase digital x-ray equipment through PLH Medical, we'll manage all components of your x-ray imaging upgrade — and remain your first and only support call.

More downtime means less revenue, so our entire focus is ensuring a seamless transition to the latest digital x-ray imaging equipment.

Prices on today's most popular digital x-ray equipment are extremely competitive. PLH Medical's direct relationship with the top x-ray equipment manufacturers allows us to secure the lowest prices on the market on your behalf.



CALL 01923-237-521
www.plhmedical.co.uk

Speak to our team today for a cost effective and worry free transition to a fully digital practice on

01923 237521 or sales@plhmedical.co.uk



AGFA DR-14e

Lightweight yet robust, the DR-14e Digital Detector offers general radiography facilities all the advantages of Direct Radiography, while maximising the use of their existing equipment. The full-field Automatic Exposure Detection (AED) detector requires no electrical connection to the x-ray system, for seamless use with virtually all conventional and mobile digital x-ray systems.

The wireless technology and lighter weight enhance operator comfort and improve exam flexibility and convenience, even in challenging imaging situations. The modern design of the detector combines ergonomics with aesthetics, with the sides sealed to prevent liquid ingress, making cleaning and disinfection easier.

14X17-Inch cassette sized digital AED detector

The AGFA DR-14e cassette-sized Digital Detector with Automatic Exposure Detection offers a compact, versatile and ergonomic solution for fast, high-quality digital imaging, even in challenging imaging situations.

AGFA DR-14 Features:

- The easiest and most versatile way to go Direct Digital
- Wireless, high resolution full-field AED detector works with virtually any conventional or mobile X-ray equipment
- Convenient 14×17-inch size and light weight provide optimal convenience and portability, for all examinations
- Easier patient positioning enhances workflow
- High DQE and optimal pixel size support lower patient radiation dose
- Cassette-less solution improves workflow and examination speed
- Excellent connectivity with DICOM conformant software and imagers enable fast sending of images
- Comes with Caesium Iodide (CsI) scintillator detector



Equine AGFA DR-10s

AGFA leads the field with their new Caesium Iodide (CsI) AED, DR flat panel detector. Featuring the newly updated MUSICA 3 “gold standard” image processing software, which includes developments specifically for the optimisation of veterinary equine images.

The DR-10s cassette-sized Digital Detector offers a compact, light-weight and ergonomic way for radiography facilities to benefit from high-quality digital imaging using virtually any x-ray equipment.

The new equine DR from AGFA enables the user to go completely wireless when used with our range of battery-powered light-weight high-frequency portable x-ray units.

The equine DR solutions feature AGFA veterinary dedicated workstation software combining the highly efficient and optimised workflow of the NX image identification quality control tool. This is the new benchmark in high-resolution equine imaging.

The modern design of the detector combines ergonomics with aesthetics, with the sides sealed to prevent liquid ingress, making cleaning and disinfection easier.

AGFA DR-10S Features:

- Lightweight, high resolution Automatic Exposure Detection (AED) detector
- Offers optimal convenience and portability
- Seamless use with virtually all X-ray systems
- High DQE and optimal pixel size, for low dose examinations
- Improved workflow and examination speed
- Extremely long battery autonomy of up to 8 hours
- Connectivity with DICOM conformant software/imagers
- MUSICA processing for excellent contrast detail and exam-independent, consistent image quality
- Caesium Iodide (CsI) scintillator detector

COMPUTED TOMOGRAPHY (CT)

Introducing ground-breaking CT products and services for decades

PLH Medical is delighted to have been chosen as Siemens Healthineers Veterinary Partner for advanced Vet CT imaging solutions. With an increased demand for high-level diagnostic imaging in Veterinary Healthcare, the SOMATOM go.Now CT from Siemens Healthineers provides the answer.

Interleaved Volume Reconstruction

Use the measured data as effectively as possible with Interleaved Volume Reconstruction (IVR).

Benefits

- Extract the maximum amount of diagnostic information from measured data.
- Enhance spatial sampling in z-direction, independent of pitch.
- Evaluate smallest structures such as lesions or fractures.

Take your system even further

Increase your system's speed and performance, and gain further clinical flexibility.

Benefits

- Increase workflow efficiency and improve reconstruction rates thanks to stronger hardware.
- Gain additional clinical flexibility in angiography, lung imaging, and orthopaedics.
- Increase the performance of the processing functionalities of CT View & GO.

All SOMATOM go.Now Vet scanners that are installed by PLH Medical include site surveys, project management, delivery, installation, and up to 15 days training with ongoing online support. Our collective services between PLH Medical and Siemens Healthineers are second to none; making us a benchmark in the industry.

We have not only been successful with the SOMATOM go.Now Vet CT scanner on technical specs, innovative features, and the performance, but also on the unwavering support of both PLH Medical and Siemens Healthineers, and the "holding hands" approach from our experts from planning to installation to training.

We have put together a fantastic Veterinary CT package, which is supported with a bespoke Vet CT service maintenance and clinical applications package. A key aim of the SOMATOM go.Now CT concept was to minimise your initial cost of investment. Therefore, the scanner components and underlying software algorithms were specifically chosen for reliability, remote serviceability, and extended tube lifetime.



CALL 01923-237-521
www.plhmedical.co.uk

In partnership
with

SIEMENS
Healthineers



SOMATOM go.Now

SOMATOM go.Now makes high-quality care accessible and helps you run a successful business – allowing you to keep an eye on profitability and stay competitive. The CT scanner features a unique tablet-based mobile workflow and comes with workflow and usability innovations that improve efficiency independent of the individual user's level of experience. It delivers great results for routine scanning and a completely redesigned service model combined with an innovative workplace design helps reduce costs.

► 32 Slice CT (IVR)



SOMATOM go.Up

SOMATOM go.Up comes with technology that is completely new to scanners of its kind making advanced procedures available for daily practice. The CT scanner features a unique tablet-based mobile workflow. In addition, it includes an innovative workplace design and an entirely redesigned service model to reduce costs. Making high-quality care accessible, it allows you to stay competitive and keep an eye on profitability.

► 64 Slice CT (IVR)



SOMATOM go.All

SOMATOM go.All enables all users to confidently take on advanced CT procedures. The CT scanner features a unique tablet-based mobile workflow, user guidance with GO technologies, and exclusive innovations such as Tin Filter low-dose technology.

It is built for standardisation of procedures and results, and allows operators to interact with patients in a more personalised way than ever before. A cardiac package is available on this scanner.

► 64 Slice CT (IVR)



SOMATOM go.Top

SOMATOM go.Top supports all users to provide the best possible scan for every type of patient – no matter the clinical demands and challenges. It is built for personalisation of processes and care, allowing every operator to optimally adapt to the individual patient and indication while interacting with patients in a more personalised way than ever before. The CT scanner features a unique tablet-based mobile workflow and can produce excellent results for the full clinical spectrum including Dual Energy imaging. A cardiac package is available on this scanner.

► 128 Slice CT (IVR)

ADVANCED ULTRASOUND

Enhance your diagnosis

Enhance your diagnosis with improved imaging performance and adaptive technologies with ultrasound machines, solutions, and services from Siemens Healthineers.

Siemens Healthineers introduces the new portable ACUSON P500™, FROSK edition ultrasound system which provides advanced imaging for veterinary practices, including excellent 2D and colour Doppler imaging.



ACUSON P500™ ultrasound system

Siemens Healthineers has engineered the ACUSON P500™ ultrasound system to be compact and portable, but equip your practice with a suite of powerful applications. Its excellent 2D and colour Doppler imaging make it your go to platform to evaluate clinical manifestations, facilitate accurate diagnoses, and to assist procedures in emergency and critical care.

The ACUSON P500™ introduces two new premium technologies that continuously provide sharp ultrasound images, regardless of animal or probe motion – Dynamic Persistence and Auto Flash Artefact Suppression.

Working together, these technologies detect movements that affect image quality and automatically reduce noise while simultaneously enhancing colour sensitivity for clear images.

Faster scanning

The ACUSON P500™ offers a wide range of innovative applications that make diagnostic and therapeutic exams less complicated and more standardised by improving scan time, expediting work flow and increasing operational efficiency.

Go further

The ACUSON P500™ enables you to work more efficiently, consistently and clearly with powerful applications that enable you to increase patient throughput. Offering exceptional detail and quality of information with over 13 innovative transducers, advanced intra-cardiac echo imaging capabilities, needle guidance solutions, and much more.



CALL 01923-237-521
www.plhmedical.co.uk

In partnership
with

SIEMENS
Healthineers

ACUSON Juniper™ ultrasound system

Siemens Healthineers ACUSON Juniper™ is a high-performance, ultrasound system that can scan virtually every animal regardless of their size, weight or condition, offering great diagnostic confidence. It offers powerful capabilities built into one of the industry's smallest ultrasound systems. The ACUSON Juniper™ weighs an average of 27% less and is up to 36% smaller than other conventional systems in its class.

ACUSON Juniper™ Features:

System height: (upright FPD) 122.5 – 163.4 cm
(upright FPD: Max. Arm + 11 cm up/down stroke)

Width: 50.8 cm

Depth: 65.4 cm; maximum depth: 84.5 cm

Weight: 76 kg

User-select control panel/monitor height adjustment



90° right and left rotation allows the user the flexibility of choosing the transducer connectors position



In partnership
with

SIEMENS
Healthineers

ADVANCED ULTRASOUND

ACUSON NX3™ ultrasound system

The rapid change in veterinary science has created a real need for ultrasound imaging that is built on productivity and efficiency. Yet when faced with limited budgets and growing patient demands, finding a smart solution that truly meets this need is often challenging. Built specifically around the way you work, the ACUSON NX3 series systems are simple and uncomplicated, yet powerful.

Intelligently designed for real-time service support, the ACUSON NX3 series enable you to securely achieve the highest levels of productivity with fast and easy remote access to Siemens Healthineers' Customer Service technical and applications experts.

The ACUSON NX3 series is versatile and built to grow with you as your needs evolve. From the intelligent system design to the easy integration of software updates, every feature works together to ensure your system continues to support your imaging needs for years to come.



ACUSON NX3™ ultrasound system Features:

- Powerful platform driven by efficiency and built for performance
- Intuitive user interface with up to 28% fewer keystrokes and 3x more user-defined keys
- 21.5" HD display and 220° endo-cavity transducer provides expanded field of view
- 10.4 inch touch display with swipe motion
- Compatibility with existing and legacy transducers



CALL 01923-237-521
www.plhmedical.co.uk

In partnership
with

SIEMENS
Healthineers

SIEMENS

FINANCIAL SERVICES

About Siemens Financial Services Healthcare Finance

Healthcare Finance is a specialist division within Siemens Financial Services in the UK. We are currently the financing partner to hundreds of private medical providers and equipment suppliers, as well as many NHS trusts.

We work in every area of the UK private healthcare sector. Our funding enables healthcare providers to upgrade and enhance facilities while preserving cash resources. It also helps equipment suppliers to complete deals efficiently by providing access to flexible finance.

We have expertise in many areas of the healthcare sector and we finance equipment from all manufacturers, including Siemens.

Why use Siemens Financial Services?



Stability and resources of the Siemens group



Specialist expertise in each area of the UK healthcare sector



Our team has over 100 years combined experience working in this sector



We are the funder, not an intermediary



We finance equipment from all manufacturers, including Siemens

Have you thought about financing?

Financing makes it possible for organisations in every area of the UK healthcare sector to obtain the equipment they require without undue strain on cashflow.



Makes the latest technology available without using capital funds or cash reserves



Assists with budgeting by defining fixed payments



Provides the ability to upgrade to new equipment on a regular basis



A cost effective alternative to bank funding



Reduces upfront costs and improves cash flow by not requiring a deposit

By opting for a carefully tailored financing arrangement from Siemens Financial Services, a healthcare operator or practice can avoid capital outlay, spread affordable payments evenly over time and alleviate the impact of VAT on cash flow.

Get in touch today to discover more!

ULTRASOUND EQUIPMENT

Outstanding performance and value across all of our SonoScape Equipment

Our range of SonoScape ultrasound scanners incorporate the latest colour doppler technology with ergonomic design for user-friendly, fast workflows. The systems provide outstanding image resolution and functionality, enabling diagnosis of the subtlest pathology, and with their robust build quality are exceptional value for busy small animal clinics.

Since its establishment, SonoScape has been committed to providing high-quality medical equipment for the healthcare sector. SonoScape specialised in the development and production of diagnostic solutions. Through innovation, SonoScape continues to not only improve the efficiency and accuracy of healthcare solutions but also to increase a sense of comfort for the patient and clinician.

SonoScape



CALL 01923-237-521
www.plhmedical.co.uk



SonoScape E1 Pro

Our compact, lightweight hand-carried Black/White scanner with high resolution imaging through easy-to-use logical controls designed for smooth workflow with quick 'boot-up' time. The E1 provides very affordable imaging at entry level with many advanced features including Pulse Wave doppler and Auto trace functions.

SonoScape E1 Features:

Size: 378mm×352mm×114mm (W×H×D)

Weight: Approx. 6.5kg (at most, including battery)
Approx. 6.1kg (at most, without battery)

Monitor: 15.6" widescreen and high-resolution color LCD monitor, LED backlight, anti-flickering and vertically and horizontally rotatable

Probe port: one (two ports can be equipped by order)

- 15.6" High Resolution LED Screen with anti-flicker & auto-adaptive LED backlight
- Auto-optimisation - enhance your images with one button
- Built-in battery
- Quantification and Analysis tools
- USB ports and DICOM connectivity
- 1-3 active transducer ports
- 500GB hard drive
- 6.5kg
- Durable Carry-Travel bag
- Lightweight compact height adjustable trolley cart



SonoScape E3

The SonoScape E3 is a colour doppler portable ultrasound system that reaches beyond your expectations due to its compact and fashionable appearance. It fulfills GI, OB/GYN, Cardiac and POC applications to fit your routine scanning needs while its colour mode will help you for more accurate and efficient diagnosis of lesions.

SonoScape E3 Features:

Monitor: 15.6" HD LCD Wide (with LED backlight)
Resolution in px: 1,920 x 1,080
Flexibility: 50° foldable (longitudinal)



SonoScape E5

A brand new portable ultrasound system SonoScape E5, brings you a distinct experience with SonoScape's traditional imaging technologies. The E5's accurate B mode and sensitive colour signal give crisp, detailed images to improve your scanning experience while increasing your diagnostic confidence.

C-Field Beam

The continuously dynamic focus provides more energy which contributes to higher contrast resolution, signal-noise ratio and uniformity in the image.

Dynamic Colour

With Dynamic Colour the sonographers can easily see in detail very small veins and slower velocities for detailed blood flow information of the patient.



SonoScape S9V

The versatile and powerful, hand-carried colour doppler ultrasound with touch-screen interface for unprecedented ease of use. Compact yet with comprehensive applications the S9V offers superior cardiac and abdominal imaging and is suited to a broad range of veterinary applications. This model is highly popular for equine scanning.

Other features include:

Spatial Compound Imaging utilises several lines of sight for optimal contrast resolution, speckle reduction, and border detection. This provides better clarity and improved continuity of structures, particularly useful for abdominal scanning.

Pulse Inversion Harmonic Imaging improves contrast resolution by reducing noise, without degradation of acoustic information.

The S9v offers superior cardiac imaging, with state-of-the-art cardiac packages such as stress echo mode.

SonoScape S9V Features:

- S9V main unit
- 15" High Resolution LED color monitor
- 13.3" High Resolution Touch Screen
- Two Transducer Connectors
- USB 2.0/ Hard Disk 500 G
- Built-in Battery
- ECG Module



X-RAY EQUIPMENT

Enhance your diagnosis with improved imaging performance

PLH Medical provides a complete range of Veterinary x-ray systems to suit any application in modern practice. From high powered static systems to lightweight battery powered portable solutions, we will have an ideal x-ray unit to match your requirements.

With the availability of mobile and portable x-ray units, veterinary practices are now able to produce digital medical images of their patients in any controlled area. These state-of-the-art systems are lightweight and house a user-friendly interface.

Portable x-ray units can help veterinarians to provide imagery that is clear while exposing patients to very small doses of radiation.



HiRay PLUS Portable High Frequency X-Ray Machine

One of the smallest and most powerful portable high-frequency x-ray units in the world! The HiRay Plus is a portable high-frequency x-ray machine, which is suitable for outdoor use as well as inside the small animal practice. Special features include the powerful high-frequency inverter, compact design, and an integrated laser pointer for precise distance measuring.

HiRay PLUS Portable Features:

- Unit Output 2kW
- Anatomical Program Recall switch stores 8 presets (kV/ mAs)
- Backlit LCD display allows easy reading of data even in sunlight
- By means of an automatic mAs controller, the real kV selected is always maintained even when the line voltage is influenced by high impedance
- Carrying case included
- Output: 30mA @ 40 – 66kV, 20mA @ 68 -100kV

Specifications:

- Collimator with bright halogen bulb and automatic timer
- Integrated laser beam for easy distance measurement
- High RF power 40 – max. 100 kV / 30 mA, 2kW
- 32 mAs settings, 0.3 – 20 mAs, with illuminated LCD display
- Anatomical programming of 8kV / mAs combinations
- Focus: 1.2 x 1.2 mm
- With 2-speed manual exposure switch on 2.5 m curled cable
- Dimensions (cm): L 28 x W 16.3 x H 16
- Weight (kg): 7.8



CALL 01923-237-521
www.plhmedical.co.uk



VET-100 Portable X-ray

The VET-100 is the most powerful and compact sized high-frequency type of x-ray machine like its previous models. All PXP series are ripple free high-frequency type with 40~50% stronger power output efficiency compared with conventional x-ray systems. Therefore, it's considered perfect for providing portable, ease of use and mobility for indoor and outdoor radiography.

VET-100 Features:

- 110kV /100mA 5kW output
- Flat touch panel, digital display
- 750 pre-set technique slots (PROM memory)
- Supplied with a sturdy carry case
- Compact sized body and the lightest weight
- High-frequency type x-ray generator
- Maximum output: 110kV / 100mA
- 750 APR memories
- Remote control software
- Equipped digital reverse display function
- Electrical requirement: 220VAC, 50/60HZ



meX+20BT meX+40BT

The meX BT range of high-frequency battery powered portable x-ray generators are compact and cordless. They incorporate the latest battery technology, providing high power outputs within a very lightweight design. The Lithium-Ion battery is rechargeable and has a very long lifecycle (of over 5 years) without losing power efficiency. Recharging time is approximately 2-3 hours, which is much shorter than conventional batteries.

meX+20BT & meX+40BT Features:

- Rechargeable battery : Lithium-Ion
- High energy battery : 3000 mAs
- Higher output : 20-60 mA / 100 kV
- Number of Exp. per full charge : 300 - 500
- RF wireless control for DR exposure (optional)
- Strong, long-life battery : approximately 5 yrs
- 21 selections of APR programs
- Dual Cross Laser & Dual Laser Pointer
- mAs energy status display
- Charger power : 110 / 220 VAC auto switching

meX+20BT lite

Ideal for equine use the meX+20BT lite is lightweight at only 7.2kg, and with integrated battery has no cables. Long lasting battery.

meX+20BT lite Features:

- Great advantage for outdoor radiography
- Long lasting battery from a single charge
- Exclusive remote controller using by hand switch
- Full charge only within 4 hours



X-RAY EQUIPMENT

Philosophy HF400 & HF200

The Philosophy is the latest innovation in our range of x-ray solutions offered at an exceptional price. The system only requires a 13amp plug and is completely computerised.

Complete with a 4-way floating top table both the Philosophy HF400 and HF200 only take 3 hours to install in practice. We can connect remotely through our service portal to help you at any stage to support the best use of the system, providing ease of service and providing peace of mind.

This unit will provide much more power than a portable unit, providing shorter exposures. Twin focal spots 0.6/1.3 are available.

The Philosophy is perfect for any upgrade to CR or DR in the future and makes taking high resolution images x-rays easy!



Philosophy HF400 & HF200 Features:

- Philosophy HF400 Power: 30 kW @ 100 kV
- Philosophy HF200 Power: 15 kW @ 100 kV
- Radiographic voltage range: 40 - 120 kV
- mAs range (load): 0.6 - 80 mAs
- Maximum intensity: 400mA
- Power supply: 220 V (instantaneous current <1A)
- Fuse: 10 A

Dimensions:	384 x 460 x 15 mm
Weight:	2.95 kg inkl. Akku
Type of detector:	Amorphous silicon with TFT
scintillator:	GOS and CsJ
Pixel size:	150 µm
Active matrix of pixels:	2336 x 2836 pixels
Size of the active area:	350 x 430 mm
Range of gray levels:	16 bit
Geometric resolution: Min.	3.36 lp / mm
Wireless data transmission:	IEEE 802.11n
Standard energy values:	40 - 150 kVp



CALL 01923-237-521
www.plhmedical.co.uk

LearningHub

CPD TRAINING



PLH Medical offer a wide range of Continuing Professional Development (CPD) courses for veterinary professionals

Having the confidence to produce diagnostic images of the highest quality in the veterinary practice requires both knowledge and competence. Our multi-faceted Learning Hub is the new place to access resources, find information & assistance, and find courses in veterinary imaging, dedicated to developing all the necessary skills.

Through innovative and interactive teaching, our range of Continuing Professional Development (CPD) courses in veterinary diagnostic imaging have been written and developed by experts in their field. Each course is designed to improve both your theoretical knowledge and practical skills, with the aim to educate and inspire to help improve standards in veterinary diagnostic imaging.

Our Head of Learning and Development has over 35 years of experience in both the human and veterinary spheres to draw on. Under his guidance, each course is developed with you in mind, and delivered by one of our dedicated team of professionals.

Through investment in learning, you can boost your confidence, strengthen your professional standing, and become more creative in taking on the challenges you may face on a day-to-day basis.

Now is the time to invest in yourself, invest in your practice and invest in your future.

Our current range of courses include:

General Radiography

- A wide range of courses available, specifically designed to cover all levels of expertise. From building on the basic knowledge, to a full understanding of radiography equipment, exposure factors and using digital x-ray systems.
- All courses are designed to be flexible and are delivered through either pre-arranged courses at venues across the UK, or in the more comfortable surroundings of your practice with content tailored specifically to your x-ray system and staff needs.

Dental

- The dental examination and dental radiography.

Ultrasound

- Basic ultrasound technology, and an introduction to the abdominal survey scan.
- Courses on more advanced subjects available on request.



For more information on the CPD training offered by PLH Medical, or if you would like to request a list of upcoming training, please get in touch.

01923 237521 during office hours

Email: cpd@plhmedical.co.uk

DENTAL X-RAY EQUIPMENT

High quality range and comprehensive line of veterinary dental equipment

PLH Medical are proud to offer a high-quality range and comprehensive line of veterinary dental equipment, instruments, and tools to meet the needs of veterinarians and their practices. Working to the highest standards of customer service and support has allowed us to become accomplished in the veterinary dental industry. We believe in providing the best possible advice and service when supplying, maintaining, servicing and repairing veterinary dentistry products.

With our combined experience of over 40 years working with veterinary dental specialists and a significant number of veterinary surgeons across the UK, we are able to provide the ideal product for your practice. With veterinary dentistry becoming one of the fastest growing areas in our profession, the likes of the X-Mind Intra Oral x-ray unit and the NOMAD Pro 2 Handheld x-ray provide the ideal solution for dental imaging.

X-Mind Intra Oral X-Ray unit

An intra Oral X-ray unit from X-Mind is the cornerstone of your daily diagnostic work. You can not only expect great image quality, reliability, and ease-of-use but an Intra Oral x-ray unit that integrates seamlessly into your practice to deliver better, safer and faster intraoral diagnostics.



- X-Mind Satelec generators are recognised around the world for their reliability and consistent performance
- The pantograph arms provide great flexibility of use and importantly accurate positioning
- The equipment has a veterinary friendly control console with exposure times pre-programmed for ease of use
- Available in wall mounted and mobile options



CALL 01923-237-521
www.plhmedical.co.uk

DIGITAL DENTAL EQUIPMENT

FireCR Dental Reader



The FireCR Dental Reader is a compact and affordable Computed Radiography PSP system. It is designed to provide fast, high-quality reading of reusable dental imaging plates, enabling better patient care. With its small footprint, the reader fits seamlessly into even the most space-challenged veterinary practices.

- From Box to First Image in 15 Minutes
- Magnetic Feeding Tray Protects Image Plates
- Supports Full Size 4c Image Plate
- Built-in Memory of the Last 100 Images

4c Imaging Plate

A set of the most frequently used photostimulable phosphor (PSP) imaging plates is included with the unit. A full range of imaging plate sizes 0, 1, 2, 3 and a 4c is available. Allowing you to capture more teeth and roots on the same image.

Midmark DR Digital Sensor

Combining unsurpassed image quality with a patented sensor housing to provide clear, crisp images with unmatched resistance to bite damage.



Designed to deliver the soft-tissue visualisation plus crown and root definition.

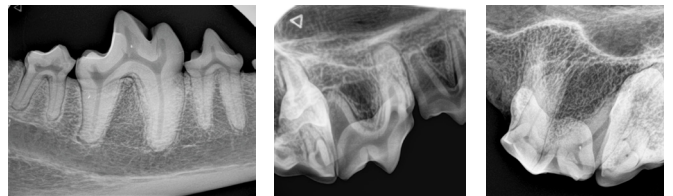
- Patented bite-resistant sensor housing design
- Kevlar® reinforced cable, designed for improved durability
- CMOS technology, designed to deliver enhanced image quality
- High-speed USB connection, designed to capture images 37% faster
- Rounded corners means easier positioning in tight spaces for better capture of roots

NOMAD Pro 2 Handheld X-ray



The NOMAD Pro 2 comes with a newly designed battery handset, with infrared connectors, together with a new charging cradle that improves the system's durability and boosts battery performance. Durability is further enhanced by a re-engineered user interface that is more scratch and moisture resistant.

The NOMAD Pro 2 will stand up to repetitive antiseptic and cross-contamination control. In a digital world, the NOMAD Pro 2 is specifically designed for digital sensors, although it works just as well with phosphor plates and traditional film as well.



- Modern Radiation Shielding
- Digital Sensors or Film
- Long Battery Life
- 0.4 mm focal spot produces sharp, high resolution images
- High-frequency, 60kV DC x-ray generator produces clear images while reducing patient dose

VETERINARY AUTOCLAVES

Veterinary autoclaves from Midmark VetAssure are your perfect partner

Veterinary autoclaves from Midmark VetAssure range of B and S class sterilisers are your perfect partner for instrument processing in today's busy veterinary environment.

Efficiency and capacity go hand in hand. Increase your practice's efficiency when you increase your instrument processing capacity. Autoclaves from Midmark are designed to optimise sterilisation output. Furthermore, they also help to reduce time and effort, but not effectiveness.

With thanks to the cutting edge research and development of Midmark's talented and experienced engineers, all Midmark Class B sterilisers are now able to achieve even more rapid Class B cycle times of up to 20% faster with our exclusive, QuikSteam™ technology.



Midmark VetAssure Vacuum Autoclaves B18 & B23

Reliable, extremely durable and uncomplicated to use, the Midmark VetAssure range of B class veterinary sterilisers come in a range of sizes to suit your requirements.

Featuring a sleek Italian design to enhance the look of your surgery, the VetAssure range retains easily wipe-able surfaces and optional data capture facilities for effortless record keeping.

Available in either a standard 18L chamber or a longer chambered 23L for larger veterinary practices and/or the sterilisation of larger instruments, we have something to suit all practice needs and requirements. We also offer a variety of flexible water solutions to comply with your requirements.

Dimensions

	B18	B23
Depth mm	610	695
Width mm	505	505
Height mm	400	400
Chamber depth mm	381	530
Weight (empty) Kg	56	60



CALL 01923-237-521
www.plhmedical.co.uk



Midmark VetAssure S18 & S23

Whether you use your steriliser all day every day or less frequently, the Midmark VetAssure is the reliable, cost effective unit for your practice, processing unwrapped instruments for immediate use.

We recognise that the steriliser is a crucial behind the scenes workhorse in your practice, providing a critical step in ensuring sterilised instruments are available on time for your next patient. Our speedy, reprogrammed cycles ensure rapid throughput and no bottlenecks in your instrument workflow.

The Midmark VetAssure standard 18L chamber is ideal for general veterinary use in small and medium-sized practices. Alternatively, consider the longer chambered 23L version, which still sits comfortably on a standard workbench, but is perfect for higher throughput surgeries or instruments used on larger animals or for specialised procedures

Dimensions

	S18	S23
Depth mm	610	695
Width mm	505	505
Height mm	400	400
Chamber depth mm	381	530



Midmark VetAssure B60

Alternatively, for larger veterinary establishments or those with a higher instrument turnover, we recommend the larger chambered Midmark Vetassure B60 steriliser.

With a wide range of rapid cycles and a single phase plug for a complete user-friendly operation, the Midmark Vetassure B60 features a low water consumption, making it an affordable and eco-friendly addition to your practice.

All Midmark's sterilisers are manufactured to EN 13060 and CE marked in accordance with the Medical Devices Directive. For the UK, they also meet the requirements of the HTM 01-05 guidelines.

Dimensions - B60

Height:	820 mm (1600mm)
Width:	680 mm (680mm)
Depth:	783 mm (783mm)
Weight:	146kg (204kg)



VETERINARY ACCESSORIES

For over 40 years, PLH Medical has been a trusted supplier of new and refurbished medical equipment and accessories.

Along with imaging solutions, PLH Medical also provides a comprehensive range of veterinary accessories and products including monitors, tables, lighting, cassettes, protective wear, and other veterinary medical supplies.

Selected from well-known and trusted companies all of these products are reliable, effective and of the highest quality. Our large selection of accessories will outfit your practice at prices that fit within your budget.

If you cannot find what you are looking for please call our friendly team who will be able and happy to assist you.



CALL 01923-237-521
www.plhmedical.co.uk



X-ray tables

We have a wide variety of radiographic tables available to choose from. These include a basic rollaway table to an elevating, four-way floating table top.



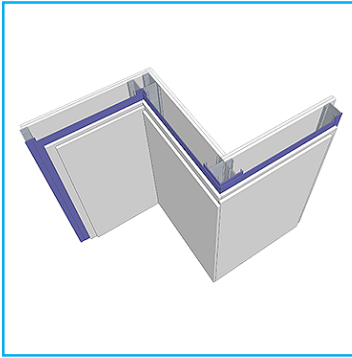
Wall hangers

Stainless steel swivel hangers for ease of use. Ideal for practices that are looking to save space. Wall racks with one, two, three or five hangers available.



Dental units

Each dental care unit we provide is of the highest level and offers features and benefits to meet the needs of practices of all sizes. We also offer high-quality accessories to pair with our units.



Lead lined plasterboard

It can be installed as an inner layer where fire rating is required or as a smooth finished surface to receive a plaster skim coat and final decoration.



X-ray cassettes

These cassettes are designed and suitable for all types of radiographic examinations and provide consistent quality in an affordable cassette.



Thyroid collar

Lead protection when you need it the most. Maximise your radiation protection and limit exposure to ionizing radiation with our thyroid collar.



Lead mittens & gloves

Our lead protection slit mitt is part of a wide selection of radiation shielding accessories. This lead glove has lead protection for the top part of your hand and a slit on the bottom to allow for gripping.



Lead gloves

Sewn flexible lead vinyl gloves with supple vinyl cover and foam liner.



Lead apron

The lead apron is a staple piece of kit for all radiology professionals and practices. Maximise your radiation protection with a range of lead aprons from us.



Foam positioning

Made from high-quality radiolucent polyester foam which has a polyurethane coating. These are dirt resistant and easy to clean. Ideal for use with small animals.



Monitors

Designed to display multiple patient parameters on one easy to read screen. Multi-parameter monitors offer a flexible solution during critical care.



Ops room lighting

Quality lighting is essential in the practice operating room. We offer a variety of high-quality LED surgical lights to meet the needs of today's operating rooms.

What our customers have to say...



The reason I chose PLH Medical was the personal service that they were able to offer and their huge wealth of knowledge in the veterinary industry. Their range of services enables us to use PLH Medical for most of our veterinary needs, the PACS system VetHub we have used for over a year now and is five years ahead of its time. I would highly recommend PLH Medical with great confidence.

James Weston

Northwest MRI & CT
www.northwestmri.co.uk



We are delighted with our brand new on-site 64 Slice Siemens CT scanner from PLH Medical. Demand for high-quality images has intensified and we were looking for a high-end scanner that would deliver operational benefits without any compromise to clinical results. We were also looking for an economical solution. PLH Medical helped us by putting together a package that included not only technical specifications and innovative features on the scanner, but also continuous support from their experts to plan the installation. A bespoke veterinary CT service maintenance and clinical applications package was also offered.

We now have the ability to scan 24 hours a day, 7 days a week and we can scan at short notice when required. It has become an essential part of our operational equipment. PLH Medical helped to make the whole process as straight forward as possible from the initial planning of the equipment right through to installation and completion.

Richard Hoile

Anderson Moores Veterinary Specialists
www.andersonmoores.com



After rigorous testing, we selected the Agfa DR 10s system for in-the-field use by our veterinary surgeons. Quick and easy to set up, with no trailing cables and long battery life between charges, the kit is reliable, highly portable and produces top quality diagnostic images. The intuitive laptop interface allows immediate in-the-field interpretation of radiographs. Our setup always performs faultlessly, even in the most challenging conditions and it is reassuring to have exemplary radiography service and support from PLH who understand the demands of our 24/7, 365 practice.

Dr Susanna Ballinger

BVSc CertAVP(EP) MRCVS RCVS Advanced Practitioner
Veterinary Director, Ballinger Equine
www.ballingerequine.com





We are extremely pleased with the DR system purchased from PLH. The picture quality is excellent and the system is easy to use, we received excellent training from their engineer who was able to answer all our questions. Delivery times and engineers turned up on schedule, leaving us confident that after sales support will be readily available. We also purchased a Bucky plate stand which makes radiographing easier and safer. The stand holds the plate securely, no plate shake which you get with someone holding the plate in a traditional holder and everyone is able to stand well clear of the beam. Despite having only received the stand the day before, the engineer was able to demonstrate its use and point out safety precautions.

Jane Fleming

The Donkey Sanctuary
www.thedonkeysanctuary.org.uk



Just wanted to drop an email to say a big thank you to all your team member for the continuing great service we receive from PLH Medical. All of your team members have been extremely supportive in a stressful time when our x-ray machine stopped working. Our new machine is working really well and all the team at Hull Vets 4 Pets are highly impressed with it.

We really appreciate the way PLH Medical dealt with the problem so efficiently that we didn't have to cancel any appointments and we were still able to continue with radiographs within a couple of days. Your customer service is always friendly and give immediate advice which is greatly received in this busy industries.

Fiona Pitchfork

Vets4Pets
www.vets4pets.com



We have just had dental radiography installed into our clinic and with slight apprehension, our scheduled training /demonstration was booked. This was delivered courteously, efficiently and clearly by PLH Medical who persuaded us all we could get the radiographs we wished for. True to their word and patient understanding they had us all setting up and taking radiographs within a short time. They were inspiring, so much so I volunteered to do the dental radiographs the following day. Thank you; your professional expertise and teaching skills were much appreciated.

Su from Goddard Vet Group

Registered Veterinary Nurse
www.goddardvetgroup.co.uk/practice/loughton/



Nationwide Service

We offer four comprehensive service and repair packages, designed to meet a variety of needs and budgets, that cover all manufacturers. Yearly maintenance and inspection visits are included in all plans, ensuring equipment remains in a safe and working condition.



01923 237521

service@plhmedical.co.uk • sales@plhmedical.co.uk

PLH Medical Ltd, Unit 4 Dakota Court, Amy Johnson Way, Blackpool Business Park, Blackpool, FY4 2RP

www.plhmedical.co.uk

